



Observatory PASCAL

Place Management, Social Capital and Learning Regions

PURE Regional Profile

HELSINKI, FINLAND

Region:

Helsinki metropolitan area, Finland

Principal PURE contact:

Ida Björkbacka

Title:

Senior Planning Officer

Institutional base with full postal mailing address:

**Economic and planning Centre
Business Development
P.O.Box 20 (Unioninkatu 28 A)
FI-00099 CITY OF HELSINKI**

Contact Details:

**Email: ida.bjorkbacka@hel.fi
Tel: +358 9 310 25281
Mob: +358 40 336 1659
Fax: +358 9 310 36254**

Name of main collaborating region:

Helsinki metropolitan area, Finland

*Suggested members of your Regional Co-ordinating Group (RCG) (between 3 and 5 Persons):
Name, organisation and email:*

1. **Marko Karvinen, City of Helsinki**
marko.karvinen@hel.fi
2. **Markku Takala, City of Espoo**
markku.takala@espoo.fi
3. **Leena Pääkkönen-Tarviainen, City of Vantaa**
leena.paakkonen-tarvainen@vantaa.fi
4. **Asta Manninen, City of Helsinki**
asta.manninen@hel.fi
5. **Ilpo Laitinen, Evidence Based Management - joint project**
ilpo.laitinen@hel.fi
6. **Ida Björkbacka, City of Helsinki**
ida.bjorkbacka@hel.fi



Observatory PASCAL

Place Management, Social Capital and Learning Regions

Suggested Peer Reviewer from region:

Marko Karvinen and Ida Björkbacka

'Identity' of Region (eg. governmental admin. region; special development zone; informal 'working reality' region, etc)

Helsinki metropolitan area. (Helsinki, Espoo, Vantaa and Kauniainen)

Helsinki: Capital city, and main administrative, industrial and commercial centre in Finland. A student city. The main industry is services, 86 % of all jobs are in service branches. A bilingual city (Finnish and Swedish). A growing population and a growing number of population with foreign background.

Espoo: Neighbouring city to Helsinki. A growing population, primarily due to high birth rate.

Vantaa: Neighbouring city to Helsinki. A growing population, primarily due to high birth rate. The population is well educated in all three cities.

REGIONAL PORTRAIT

(Please list key issues of interest and relevance to PURE)

(i) *Approx. population and any key features: (e.g. new migrant numbers)*

Population Jan. 1st 2009

1,3 million people in the Helsinki region

Helsinki: 577,000 inhabitants

Espoo: 242,000

Vantaa: 195,000

Immigrants almost 10 % of the population in Helsinki

Increase of population(%) 1999-2008

	Per annum
Finland	0,3
Helsinki Region	1,0

Source: Statistics Finland

The Helsinki Metropolitan Area and the larger functional urban region, the Helsinki Region, have got top positions in several international benchmarks. This is true especially for economic performance, living conditions, R&D, and innovations.

(ii) *Other essential geographical features:*

Urban area with lots of green spaces and large forest areas, surrounded by the Baltic sea. The population density in the Helsinki Region is 344 inhabitants per sq.km, and in Helsinki 2,700.

(iii) *Economy, industries and employment features:*

Advanced economy, Helsinki Region produces over 40 % of revenue of all business activities in Finland. The service sector accounts for 82 per cent of all jobs in the region. In Helsinki and the entire region, the economic activity rate is 76 %, in Finland 70%. The educational structure is favourable.

For more information on all essential features of the Helsinki Region see

- http://www.hel2.fi/tietokeskus/julkaisut/pdf/tasku09_englanti_net.pdf
- http://www.hel2.fi/tietokeskus/julkaisut/pdf/09_09_01_state_of_helsinki_region.pdf
- http://www.helsinginseutu.fi/wps/portal/HelsinginSeutu_en?WCM_GLOBAL_CONTEXT=/HS/The+Region+of+Helsinki/Home_1
- http://www.hel2.fi/tietokeskus/julkaisut/pdf/tasku09_englanti_net.pdf

KEY ISSUES AND CHALLENGES CONFRONTING THE REGION

(i) *Economic issues:*

1. At present, decrease in economic growth, a problem for the whole country.
2. Growing unemployment, especially among the young.
3. Maintaining the welfare services and social cohesion also in times of recession when the tax revenues are at a lower level.
4. How to get a growing economy, how to attract firms and new businesses, how to provide more and new jobs.
5. Recognizing and developing new fields of economic importance.

Key websites for more information:

- http://www.helsinginseutu.fi/wps/portal/HelsinginSeutu_en?WCM_GLOBAL_CONTEXT=/hs/The+Region+of+Helsinki/Topics/Trade+and+labour+market
- http://www.hel.fi/wps/portal/Helsinki_en/Artikkeli?WCM_GLOBAL_CONTEXT=/Helsinki/en/Current/Current&CACHEPARAM=tae_uutinen_en_2010
- http://www.hel.fi/wps/portal/Talousjasuunnittelukeskus_en/Elinkeinopalvelu_en?WCM_GLOBAL_CONTEXT=/Taske/en/Economic+Development

(ii) *Social issues including health:*

1. Ageing population and provision of health and community services.
2. High costs of apartments in the Helsinki region
3. How to tackle and avoid problems linked segregation and disparities in health and well-being. How can you act in anticipation for better situation.
4. User-driven services for the ageing and foreign population (for example living labs)
5. Jobs for all.

Key websites for more information:

- http://www.helsinginseutu.fi/wps/portal/HelsinginSeutu_en?WCM_GLOBAL_CONTEXT=/HS/The+Region+of+Helsinki/Home
- <http://www.helsinkilivinglab.fi/>
- http://www.hel.fi/wps/portal/Kiinteistovirasto_en



Observatory PASCAL

Place Management, Social Capital and Learning Regions

(iii) *Environmental issues:*

1. **Climate change challenge**
2. **Traffic and transportation systems**
3. **Urban sprawl (increasing car dependency)**
4. **Advancing sustainable development**

Key websites for more information:

1. <http://www.>

(iv) *Cultural issues:*

1. **Facing the multicultural society, population increase is primarily based on immigration**
2. **Culturally thriving city and city region. A new cultural strategy will be drawn.**
3. **Helsinki World Design Capital 2012 Bid.**

Design is a factor deep-rooted into life and the evolution of Helsinki. The area is not only home to world-famous design in the traditional sense, but design of systems and services is an integral part of the development of the Helsinki region and forms a cornerstone of its competitiveness.

4. **Culture and a livable city.**
5. **Creative industries.**

Key websites for more information:

- http://www.hel.fi/wps/portal/Kulttuurikeskus_en/?WCM_GLOBAL_CONTEXT=/Kulke/en/Etusivu
- www.designhelsinki.fi

(v) *Other issues or dimensions:*

(e.g. political & administrative, civic and participation)

1. **Metropolitan development and metropolitan policy.**
2. **Innovative models for service provision. The innovative model should make the best use of the knowledge of the service providers' staff and also elevate the role of the customers or clients, i.e. deal with the customers and clients as important actors in developing the particular service. This issue is also linked to active immigration and education policies.**
3. **Citizens' participation.**
4. **Improved understanding of opportunities for development and engagement in the region.**

Key websites for more information:

- http://www.hel.fi/wps/portal/Helsinki_en/Artikkeli?WCM_GLOBAL_CONTEXT=/Helsinki/en/City%20government/Participation/
- http://www.helsinginseutu.fi/wps/portal/HelsinginSeutu_en?WCM_GLOBAL_CONTEXT=/hs/The+Region+of+Helsinki/Cooperation+in+the+region

Observatory PASCAL

Place Management, Social Capital and Learning Regions

UNIVERSITY AND OTHER HIGHER EDUCATION INSTITUTIONS (HEIs) PORTRAIT

(Please describe in a few words the HE system operating in the region, in terms of any important matters, the following):

(i) Structure, legal and financial status of HE system

The knowledge infrastructure in the Helsinki region is large-scale and diverse. We have nine universities and six universities of applied sciences. The R & D expenditure in the region counts for four percent (4%) of the GDP, and the share of the Helsinki region of all investment in R & D in Finland is as high as 40 %. In terms of R & D personnel the Helsinki region performs well in European comparison. HEIs are funded mainly by the public money. In addition they compete for international and private resources.

(ii) Main priorities for the HEIs in the region

Universities have a focus on teaching and research and in addition on engagement with business development, municipalities and community.

(iii) Relevant recent changes and developments in policy and/or practice

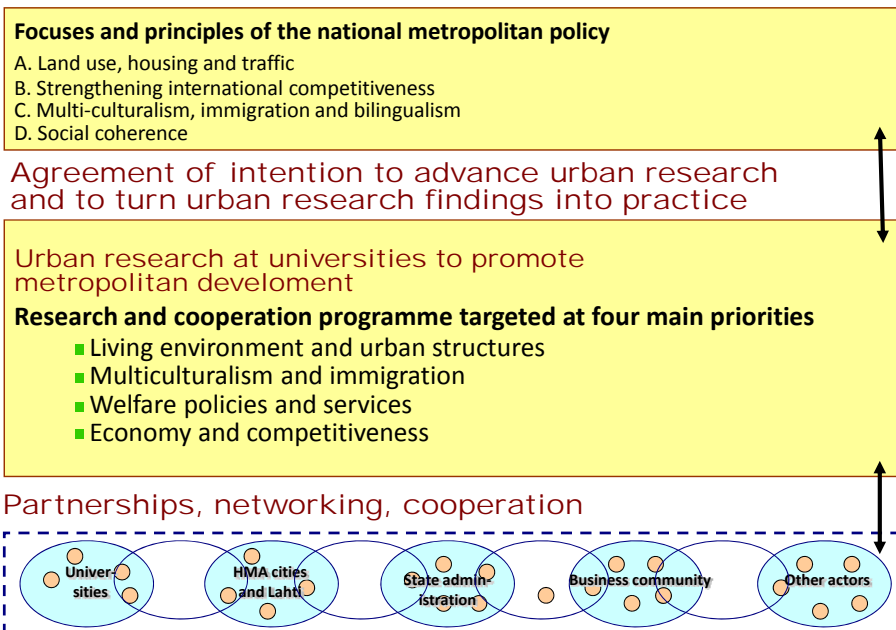
Helsinki University of Technology, The Helsinki School of Economics and the University of Art and Design form together Aalto University from the beginning of 2010.

A new model for cooperation between HEIs and municipalities is currently being developed in the frame of the new national metropolitan policy (the new cooperation model will enter into effect from the beginning of the year 2010). The focus of the research is on the specific needs of the metropolitan region

[see (iv) Ways of organising and managing within HEIs].

Urban Research and Metropolitan Policy
Project secretariat, 27 October 2008

METROPOLITAN POLICY AND URBAN RESEARCH



(iv) Ways of organising and managing within the HEIs



Observatory PASCAL

Place Management, Social Capital and Learning Regions

Typical for the Helsinki Metropolitan Area is the strong cooperation between the local authorities and the universities as well as with companies. The joint Innovation Strategy and Culminatium (www.culminatium.fi) are good examples. Universities and polytechnics/universities of applied sciences cooperate in the promotion of the science-related business development, in urban and traffic planning regarding campus areas, in attracting international students and in urban research in general. Through this cooperation the actors involved intend to create synergies to their own benefit and to the benefit of Helsinki's development in general.

To implement the vision of the Helsinki Metropolitan Area (see briefing paper) authorities and universities defined a joint project entitled Helsinki Education and Research Area (HERA). This project is a consortium of nine universities and six polytechnics cooperating with the stakeholders in the region and abroad. HERA is covering the whole academic spectrum from natural sciences to technology and business and from humanities to design, music and fine arts¹.

Furthermore, seven institutions participate in a joint research programme for the metropolitan area called 'Cities in transition': the Ministry of Education, two universities (University of Helsinki and Helsinki University of Technology) and four municipalities (Espoo, Helsinki, Lahti and Vantaa). The aim of the co-operation is to consolidate urban studies that support the development of the Helsinki Metropolitan Area as a university discipline of research and education, and to strengthen the innovation system of the Helsinki Metropolitan Area and its cities². An important element of this project is the appointment of nine professors in different aspects of urban research (European metropolitan planning, urban history, social (urban) policy, urban sociology, urban economics, urban ecology, urban ecosystem studies, urban technological systems and urban geography). Through this research programme, the universities intend to support municipalities in the Helsinki Metropolitan Area with the provision of applied knowledge on urban development, while the municipalities support the university with both the financial means and the research requests and collaboration. Not only the common strategic needs and research priorities have been drafted in the research program, but also the specific research interests of the participating municipalities have been taken into account.

Today, the model of professorships in urban research is being further enlarged (From the beginning of the year 2010). The new structure is developed in the frame of the new national metropolitan policy. The focus of the research is on the specific needs of the metropolitan region. The aim is to achieve an agreement between all stakeholders - the cities, universities and universities of applied sciences in the region and the state administration – in order to strengthening urban research and to advance the use of urban research findings and scientific knowledge.

In addition Innovative City® Program - R&D cooperation for promoting sustainable city - program aims at producing sustainable urban innovations through multidisciplinary cooperation. The program was launched by the City of Helsinki and Helsinki University of Technology (TKK) in 2001. Until now there have been launched altogether 29 research projects of which budget is some 13 million euros. Projects have brought together more than 200 professionals from the city of Helsinki, TKK and companies. The program operates by mapping the cooperation opportunities and by developing procedures that support R&D cooperation the whole way from searching for the ideas and conceptualizing the research projects to the efficient use of their results. The program itself is financed by TKK and the city of Helsinki. The main financiers of the

¹ <http://www.helsinki.fi/hera/>

² http://www.valt.helsinki.fi/blogs/kaupunkitutkimus/english/Cities_in_Transition1.pdf



Observatory PASCAL

Place Management, Social Capital and Learning Regions

projects are the Finnish Funding Agency for Technology and Innovation (TEKES), other cities, ministries, European Union, companies and other communities.

Moreover City of Helsinki works together with The Helsinki School of Economics (HSE), which is the largest and leading business school in Finland and a globally acknowledged player in management education. Forms of co-operation are: consultation, education, seminars and research projects.

HEIs in REGION and larger Metropolitan Region

- **Hanken School of Economics**
- **Helsinki School of Economics – HSE**
- **University of Helsinki**
- **Finnish Academy of Fine Arts**
- **The Finnish National Defence University**
- **The Sibelius Academy**
- **University of Art and Design**
- **Theatre Academy Helsinki**
- **Helsinki university of technology**
- **Arcada University of Applied Sciences**
- **Diakonia University of Applied Sciences**
- **Haaga –Helia University of Applied Sciences**
- **Humanistic University of Applied Sciences**
- **Häme University of Applied Sciences**
- **Lahti university of Applied Sciences**
- **Helsinki Metropolia University of Applied Sciences**

Statistics on number of students etc. are provided in the briefing paper.

There is also a master plan of knowledge presented on the map (osaamisen yleiskaava).